

STANDING ABDUCTOR MACHINE / 1FE096



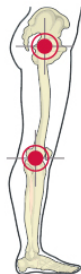
Features

- MACHINE FOR TRAINING ABDUCTOR AND GLUTEUS MUSCLES

Technical Info

- LARGE FRONT SUPPORT HANDLES
- FRONTAL WEIGHT PACK

Movement



Exercise 1

Mono-Articular

Hip Bone

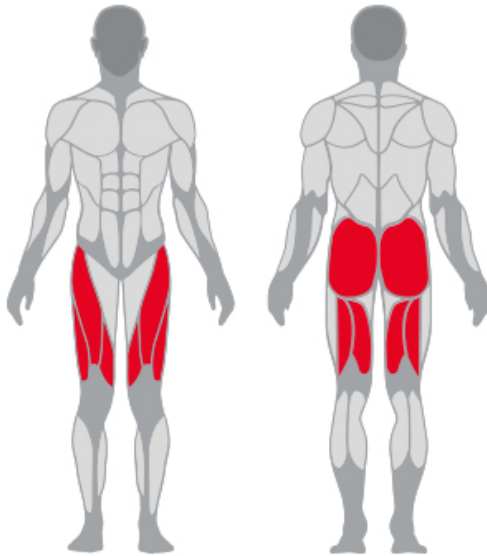
Exercise 2

Multi-Articular

Hip Bone

Knee

MUSCLES



TECHNICAL SPECIFICATIONS

Width	80 cm
Length	160 cm
Height	160 cm
Weight	230 Kg
Standard Load	100 Kg

PANATTA srl

Via Madonna della Fonte 3/c - 62021 Apiro (MC) Italy
T. +39 0733 611824 - F. +39 0733 611777
www.panattasport.com - info@panattasport.com

29/3/2021

Panatta® reserves the right to modify its products and documentation at any time without prior notice. All Panatta® brand and patents are owned by Panatta s.r.l. in Italy and abroad. Panatta © Copyright.
Panatta® si riserva il diritto di modificare i prodotti e la documentazione senza obbligo di preavviso. I marchi ed i brevetti Panatta® sono di proprietà della Panatta s.r.l. in Italia e all'estero. © Copyright Panatta.

The accessories (dumbbells, discs and barbells) are always placed as decorum therefore not included in the machine.